

VIVREAU®

High Volume Bottler Standalone V3-201 Cut Sheet

Our high volume bottling systems have redefined the way businesses consume water, eliminating the need for costly and wasteful single-serve bottled products while providing exceptionally high quality, mains-fed filtered and chilled water.

Project: _____

Item#: _____

Quantity: _____



Standard features:

- Dispenses high volumes of chilled still and sparkling water on demand
- High performance ice-bank refrigeration
- LED control panel with alarms for CO2 bottle replacement and internal drip tray
- 0.2 sub-micron activated carbon block filtration
- Filling takes approx. 16 sec / 750 ml bottle
- 100 Designer Vivreau bottles comes standard with unit

Options & Accessories:

- Custom branding and messaging is available for reusable bottles to convey your commitment to the environment. Multiple bottle styles to choose from.
- Antimicrobial films to be attached on the touch handles.
- Natural and Organic flavor collections available to provide a health-minded alternative to sugary sodas and expensive fruit infused service.

Ideal for:

Conference & Meeting Facilities, Country Clubs, Healthcare, Higher Education, Hospitality, Parks & Destination, Hotels, Restaurants, Refreshment Services, Senior Dining, Sports and Leisure Facilities

Average output capacity:

21 gal/80L per hour of chilled still or sparkling water



STILL



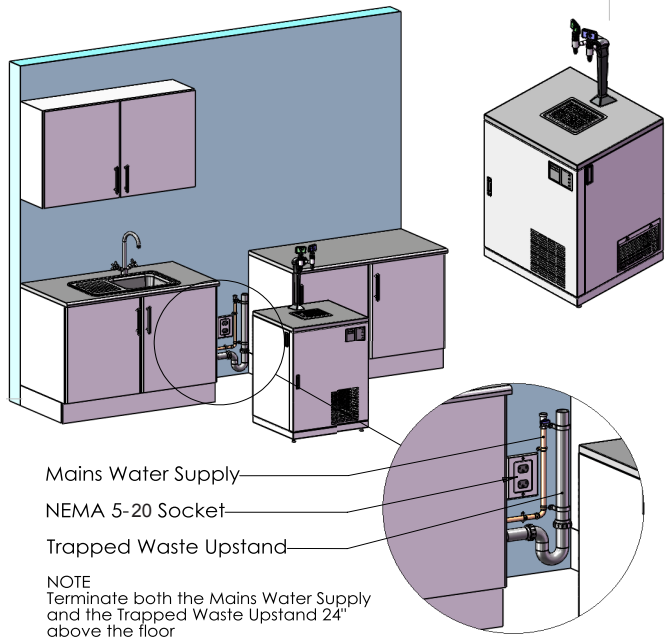
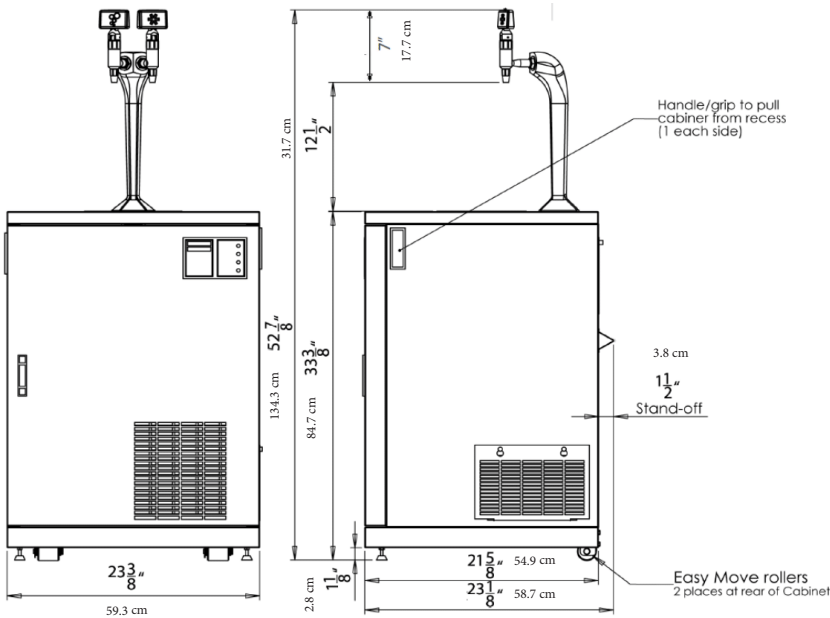
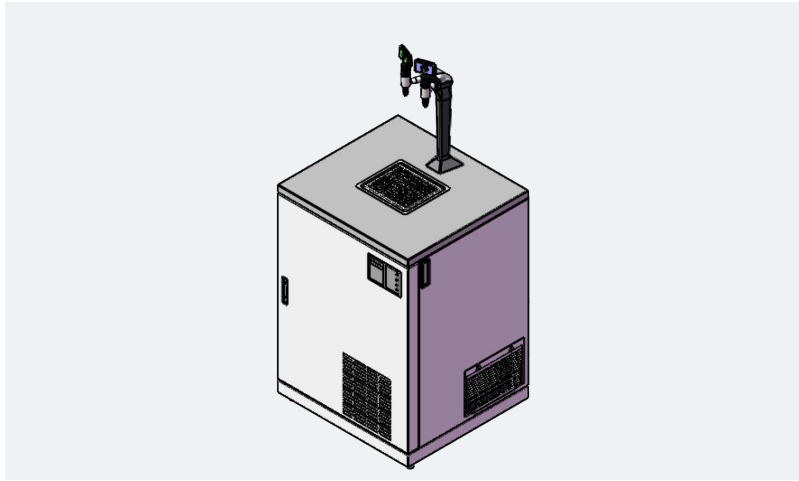
SPARKLING

Specifications	
Design	Floorstanding
System dimensions (W X H X D)	23 3/8" X 52 7/8" X 23 1/8" inch 59.3 X 134.3 X 58.7 cm
Weight	165 lbs 74.8 kg
Electrical	
Electrical Requirement	(1) 20amp electrical circuit GFCI recommended (NEMA 5-20R) 120V, 60Hz (11 amps)
CO2	
CO2 (customer supplied)	If connecting to a bulk or existing CO2 system, a CO2 line terminating at a 1/4" (0.6 cm) barbed shutoff valve must be available within 40" (101.6 cm) of the System installation site, 100psi minimum pressure. 20 lbs CO2 cylinder recommended to fit inside cabinet of unit.
Plumbing	
Water connection	1 potable 1/2" (1.2 cm) cold water supply terminating in a 1/2" (1.2 cm) ball valve with a 1/2" (1.2 cm) female pipe thread
Drip tray drain	Customer needs to supply a rigid vertical pipe that drains to a properly trapped drain according to local codes. The vertical pipe for the drip tray drain must be located inside the installation cabinet and must be at least 1 1/4" (2.7 cm) ID.
Minimum water pressure	50 PSI
Minimum water flow	80 gallons, 302.8 L per hour
NOTE: Any incoming water temperature above 60°F (15.5°C) will severely compromise the ability for the system to maintain a cold water supply.	



All Vivreau products are Intertek and NSF Certified.

Equipment Dimensions



Consultant specification:

Vivreau High Volume Water Bottling System, dual tap, freestanding cabinet, self-contained ice bank refrigeration system, advanced micro-filtered, chilled still and sparkling water, twin tap with removable nozzles & stainless steel drip tray, accommodates up to 20 lb CO2 cylinder (cylinder not included), front feet, rear rollers, x1 20amp electrical receptacle (5-20 R) 120V 60Hz (11 amps), NEMA 5-20R, ETL, NSF (for indoor use only)