



V3-205

Specification Sheet

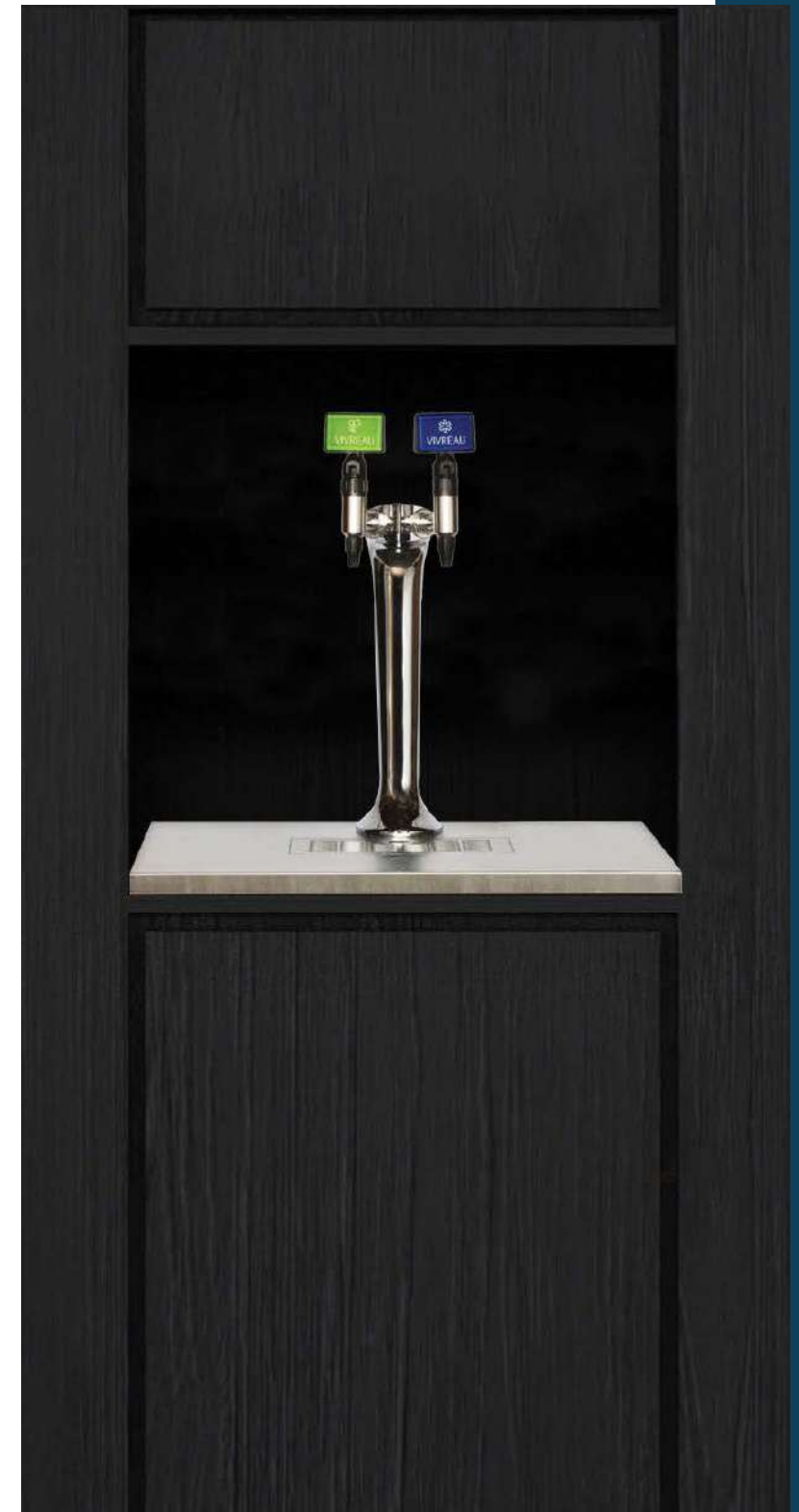
VIVREAU®



Countertop Bottler

Re-usable glass bottler | V3 - 205

- Dispenses chilled, still water
- Substantially reduce costs of purchasing pre-bottled mineral waters
- Re-usable glass bottles in 425ml, 700ml, 750ml and 1 liter sizes
- Bottles can be customized
- Save the environment - eliminate regular deliveries, as well as the disposal of empty bottles and packaging
- High performance ice-bank refrigeration system: capable of delivering very high volumes of chilled water at low temperatures, particularly at peak demand times
- Power-saving option to reduce electricity
- Eliminate any storage issues
- Purpose designed bottle-washing trays, designed to fit most commercial dishwashers
- Removable tap nozzles for ease of cleaning and sanitizing
- Stainless steel drip tray
- The dispenser has an internal Anderson Brass model ABF-1LL Double Check Valve certified to **ASSE 1022**



Please Read First

This Vivreau Water Dispenser is unlike any other water system you may have worked with and requires the following to install.

Millwork

Below Counter - Standard Cabinet Dimensions

Width 24" - Depth 24" - Interior Height 29 ½"

Above Counter - Tap Head Clearance

Tap Height: 19 ½"

Cabinet Ventilation

All vents must open to fresh air in a free and unobstructed area. 24 Square inches of opening is required for each of the top and bottom vents

Plumbing

Water Connection

1 potable ½" cold water supply terminating in a ½" ball valve with a ½" female pipe thread

NOTE: Ensure the incoming water valve is placed high enough in the space so as not to be obstructed by the Vivreau chiller/carbonator

Electrical

Outlets

(1) 20amp electrical circuit GFCI recommended (5-20R) 120v, 60Hz (8 amps)

CO2 (Customer supplied)

Design

Since the equipment is installed in component form, there are varying configurations for installation - Third party vents or other design solutions are okay as long as the overall size of the vented area is maintained.

Water Supply

- Minimum water pressure 50 PSI
- Minimum water flow 80 Gallons per hour

NOTE: Any incoming water temperature above 60°F will severely compromise the ability for the system to maintain a cold water supply

Drip Tray Drain

A rigid vertical pipe that drains to a properly trapped drain according to local codes - The vertical pipe for the drip tray drain must be located inside the installation cabinet and must be at least 1 ¼" ID

Please refer to the rest of this document for further details regarding each specification. Contact Vivreau with any questions: +1 877 999 1044

Countertop Bottler North America V3-205 Specification Sheet

Product Dispensed:

Advanced micro-filtered, chilled still and sparkling water

Application:

For the purpose of filling Vivreau re-usable glass bottles

Equipment Dimensions:

Due to the fact that the equipment is installed in component part form, there are varying configurations for installation. As a guideline, a cabinet to the following dimensions will be sufficient:

- Width 15”
- Depth 18 ½”
- Height 20”
- If the system is to be installed in an enclosed space or cabinet adequate ventilation must be provided.

(failure to provide ventilation will cause system failure)

Please note that the system is installed as an Under Counter unit. Alternatively it can be installed as a Counter Top system.

Countertop: (alternative option)

System is installed as one unit on the countertop with the dispense taps mounted on the front. Refer to Bottler V3-204

The following services are required to be supplied by the customer and must be available prior to installation:

Millwork

Minimum Standard Cabinet Size Required for System:

Interior Height 29 ½”

Width 24”

Depth 24”

Electrical

1, 20amp electrical circuit (5-20R) 120v, 60Hz (8 amps)

Plumbing

- 1 potable 1/2" cold water supply terminating in a 1/2" ball valve, 1/2" female pipe thread. (ball valve must be accessible for service and installation).
*The Vivreau system incorporates back flow prevention, any additional back flow devices required by local or state code must also be supplied by the customer prior to installation. There should not be any other filters/pre-filters before the Vivreau system.
- Minimum water pressure 50 PSI
- Minimum water flow 80 Gallons per hour
- Drip Tray Drain: Customer needs to supply a rigid vertical pipe that drains to a properly trapped drain according to local codes. The vertical pipe for the drip tray drain must be located inside the installation cabinet and must be at least 1 1/4" ID.

CO2

- CO2 (customer supplied) CO2 must be available for installation.
- *If connecting to a bulk or existing CO2 system, a CO2 line terminating at a 1/4" barbed shutoff valve must be available within 40" of the System installation site, 100psi minimum pressure.

Location of Services: (all services must be accessible for installation and service)

- Please ensure all services are kept within 40" of bottling system. Unless otherwise specified
- Water shut-off valve to be located at low level. Please ensure that there is sufficient room for a 6" long fitting to be connected to the shut-off valve.
- Top of waste circuit should be located a minimum of 6" below the work surface the drip pan will be installed in.

*The taps must be mounted on the work surface directly above the main system.

Insulation:

Please ensure that all water pipes feeding the Vivreau System are correctly insulated to ensure that the water does not heat up within the pipes prior to entering the Vivreau system. This is essential for water quality reasons.

August 2021

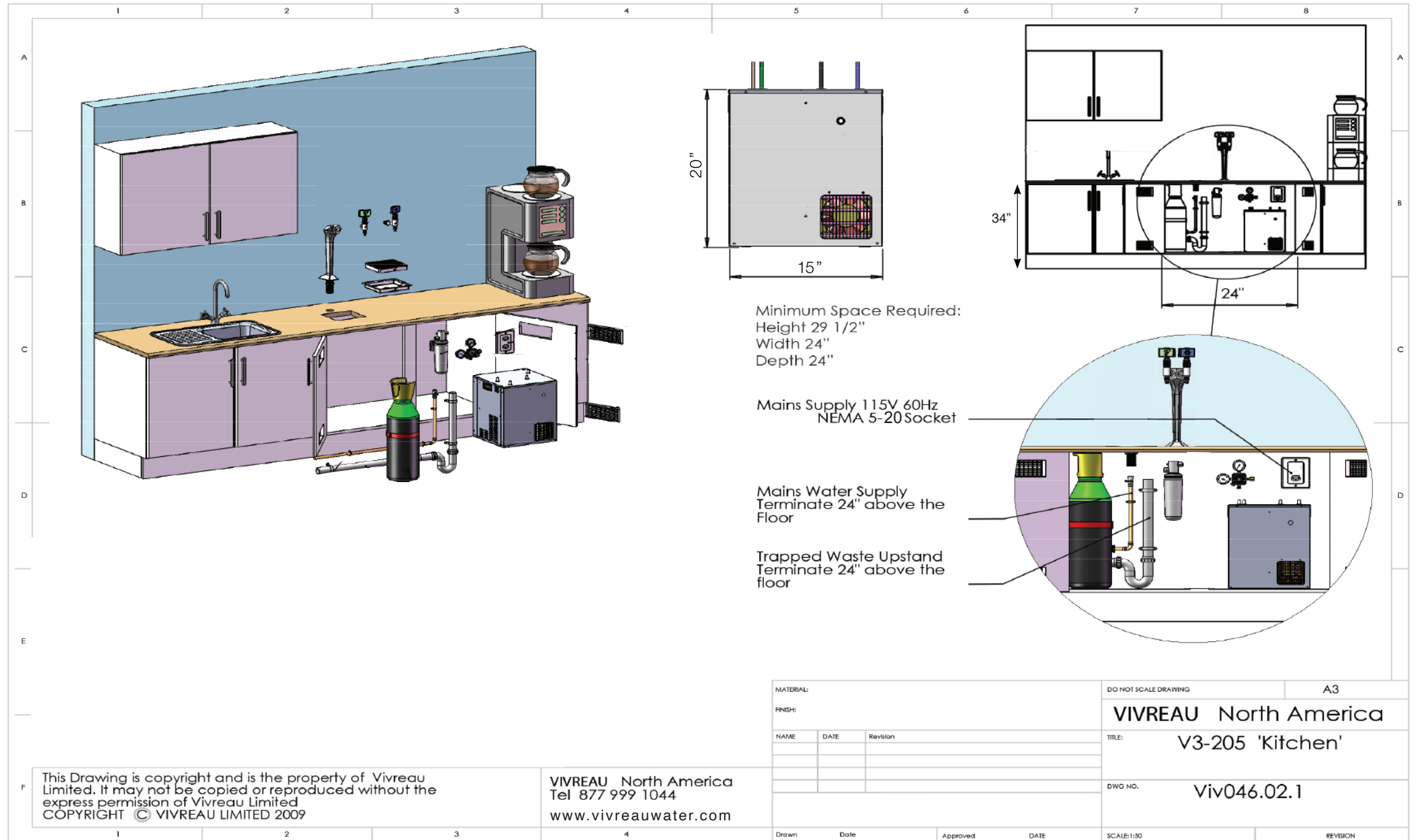
Female Water Supply
1/2" Threaded Ball Valve



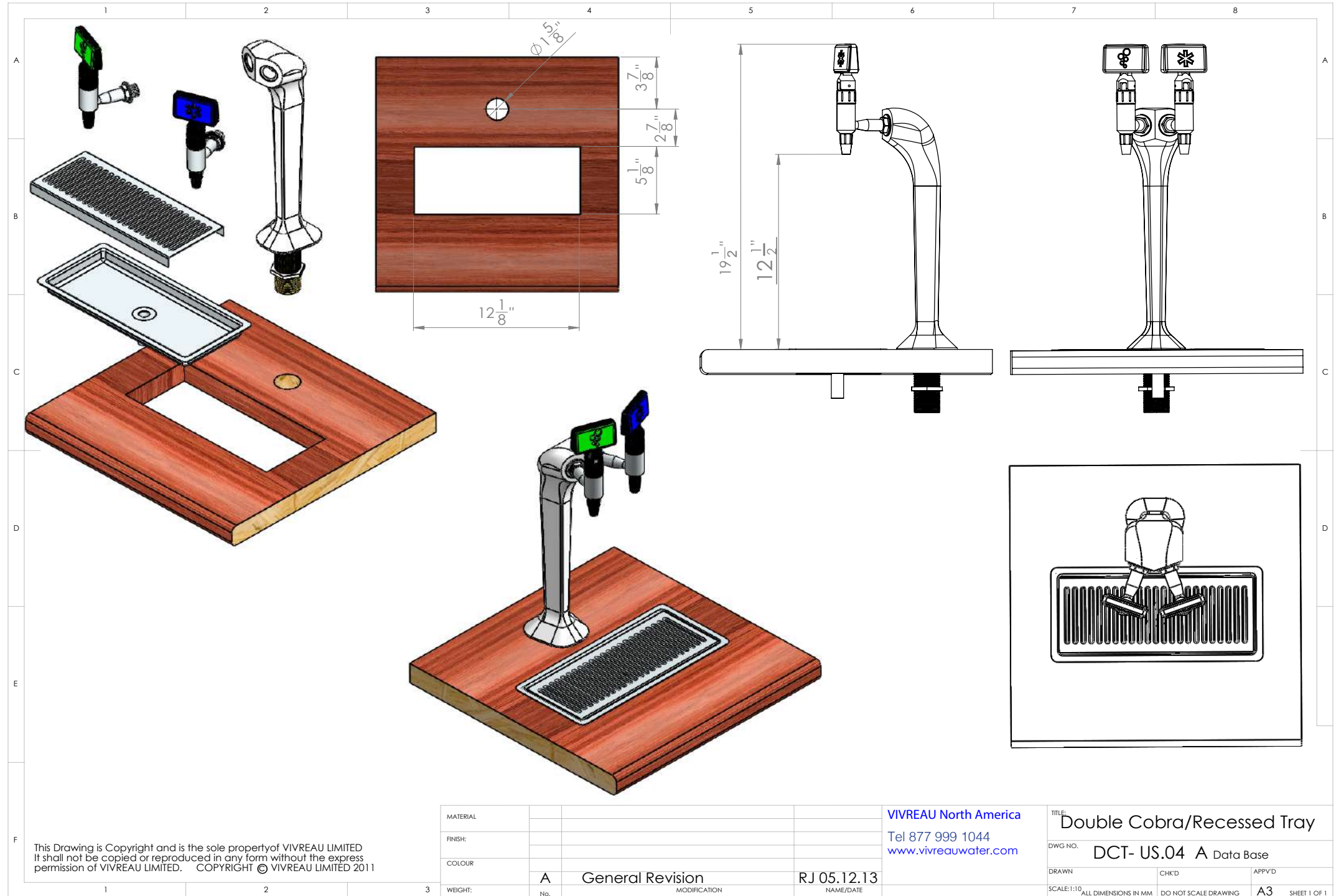
CO2 Supply
1/4" Barbed Shutoff



Example Cabinet Measurements



Worktop Cutout



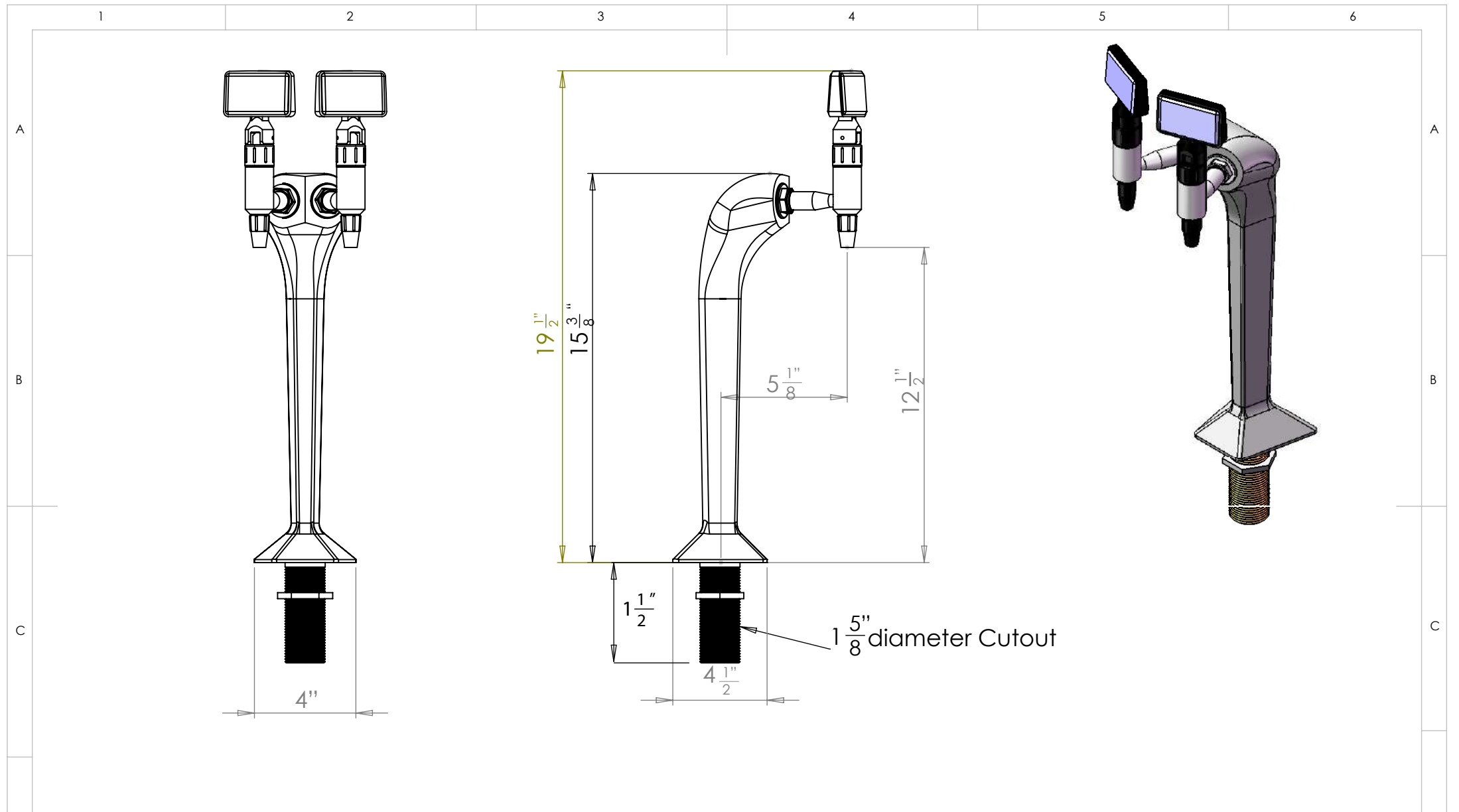
This Drawing is Copyright and is the sole property of VIVREAU LIMITED
 It shall not be copied or reproduced in any form without the express
 permission of VIVREAU LIMITED. COPYRIGHT © VIVREAU LIMITED 2011

MATERIAL			
FINISH:			
COLOUR			
WEIGHT:	A	General Revision	RJ 05.12.13
No.		MODIFICATION	NAME/DATE

VIVREAU North America
 Tel 877 999 1044
www.vivreauwater.com

TITLE:	Double Cobra/Recessed Tray		
DWG NO.	DCT- US.04 A Data Base		
DRAWN	CHK'D	APP'VD	
SCALE: 1:10	ALL DIMENSIONS IN MM	DO NOT SCALE DRAWING	A3 SHEET 1 OF 1

Equipment Dimensions

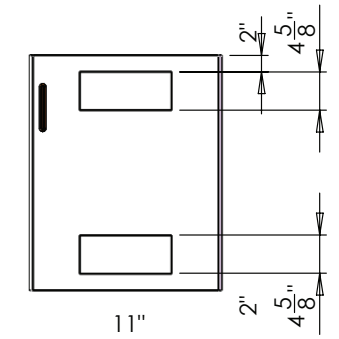


This Drawing is COPYRIGHT and is the sole property of VIVREAU Limited. It shall not be copied or reproduced in any form without the written permission of VIVREAU Limited DO NOT SCALE DRAWING		NAME	SIGNATURE	DATE	Vivreau North America 1 877 999 1044 www.vivreauwater.com	SYSTEM				
		CHK'D				Twin Cobra CB2				
		APPV'D			MATERIAL:					DWG NO.
		REVISION				WEIGHT:	SCALE	DRAWN	DATE	SHEET 1 OF 1

PLEASE NOTE

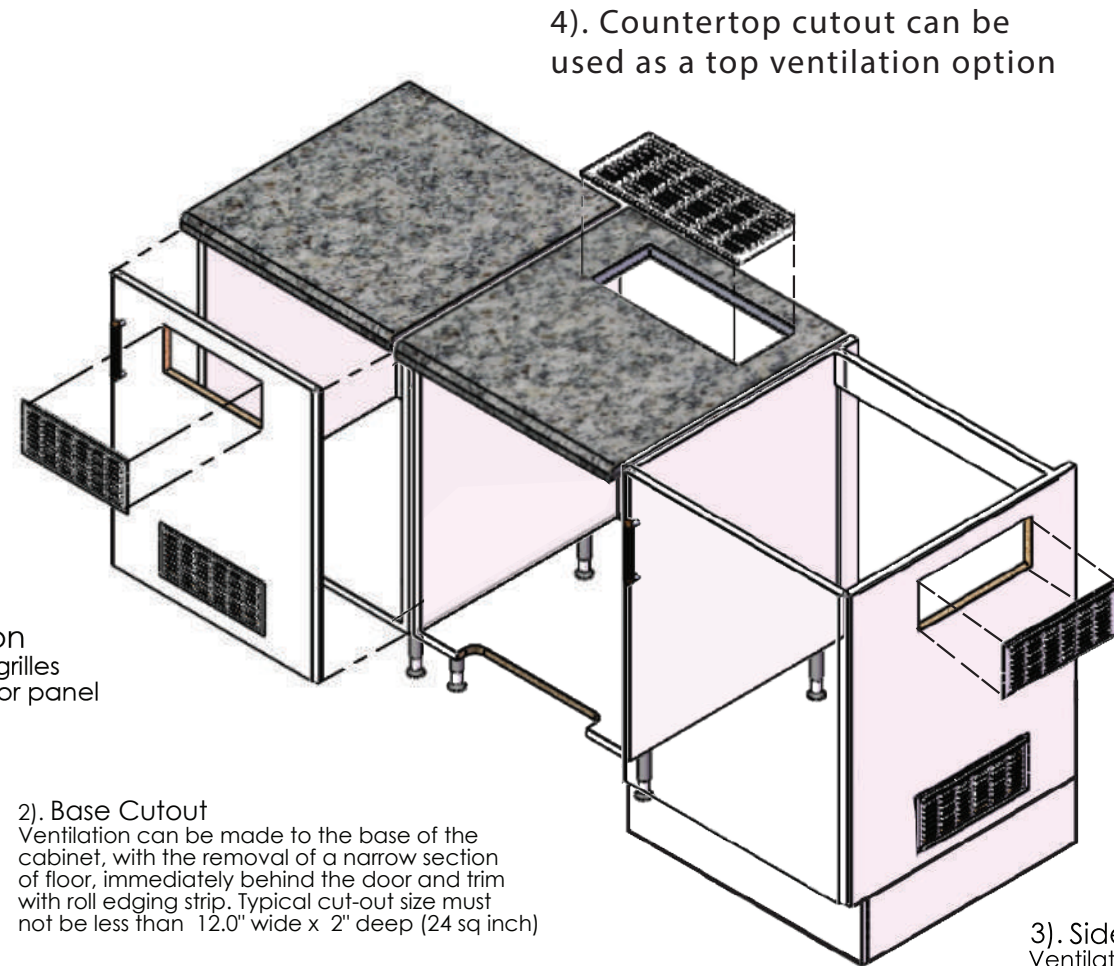
All vents must open to fresh air in a free and unobstructed area

24 square inches of opening is required for each of the top and bottom vents. 48 square inches in total



Cut-out detail for the available 12" VIVREAU grill, shown in a 23.5" (24") wide door

Approved Methods of Cabinet Ventilation

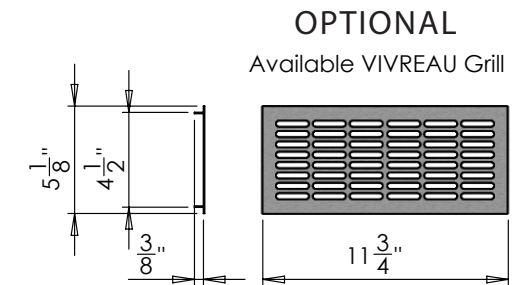


1). Front Ventilation
Showing Ventilation grilles cut in a standard door panel

2). Base Cutout
Ventilation can be made to the base of the cabinet, with the removal of a narrow section of floor, immediately behind the door and trim with roll edging strip. Typical cut-out size must not be less than 12.0" wide x 2" deep (24 sq inch)

3). Side Ventilation
Ventilation grilles cut in the side of a standard cabinet. The grilles may be fitted on either side
Does not open into an enclosed cabinet.

4). Countertop cutout can be used as a top ventilation option



The cabinet may be ventilated in several different ways to prevent excessive heat build up. The methods shown all take advantage of natural circulation by placing two grilles or cut-outs; one near the base and the other at the top of the enclosure.

VIVREAU[®]

ADVANCED WATER SYSTEMS

Contact Info

Phone Number:

+1 877 999 1044

Email:

InfoUSA@vivreau.com

InfoCanada@vivreau.com

Or visit vivreauwater.com